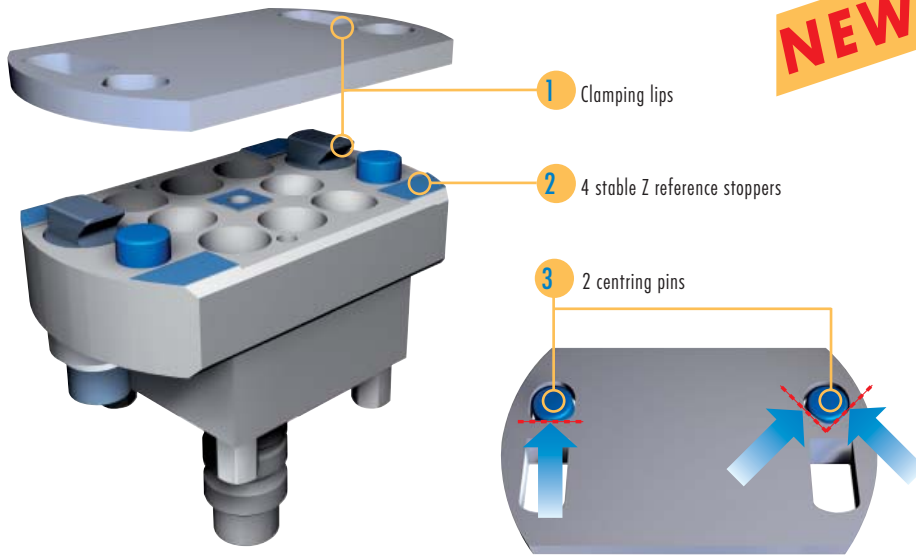
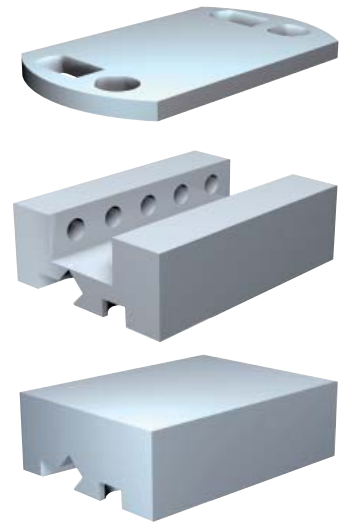


The RefTool holder brings completely new possibilities to clamp electrodes fast and economic.

1. The function



2. Economic electrode holders



3. The application

3.1. RefTool graphite adapter

- Screw the RefTool graphite adapter on the graphite blank
- Cut and use the electrode in the system
- Store the electrodes together with the economic graphite adapter



3.2. RefTool graphite clamp

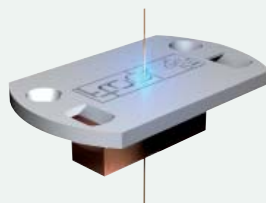
- Clamp the graphite blank into the clamp
- Cut and use the electrode in the system
- Store the electrodes with the economic graphite clamp



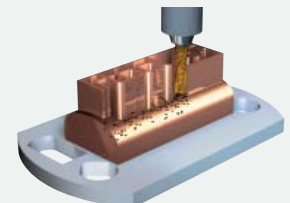
**3.3. RefTool WEDM adapter
RefTool free clamp**

- The electrode can be cut in reference position by wire EDM through the RefTool WEDM adapter or the free clamp

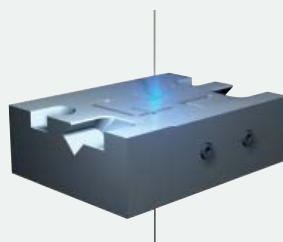
- Complex form electrode-cut by WEDM



RefTool WEDM adapter



- Complex profiles for serial jobs cut by WEDM



RefTool free clamp

